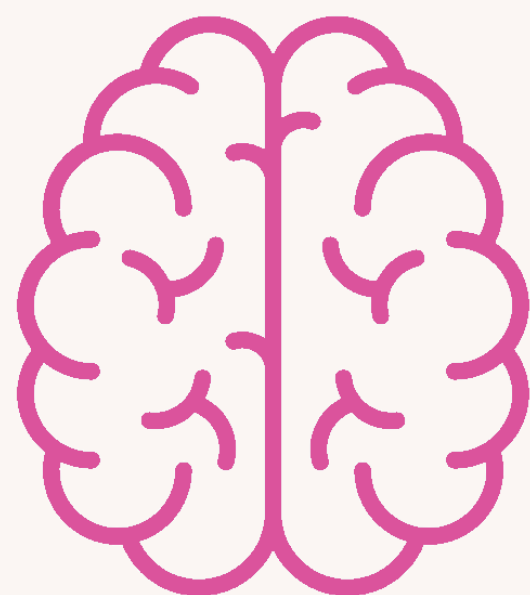


HAVE YOU OR YOUR CHILD BEEN DIAGNOSED WITH CYSTINOSIS?

you/they may qualify for a
research study looking at
how the brain works in
cystinosis

**THIS IS A 3-DAY STUDY INCLUDING EEG
AND COGNITIVE TESTING.**

**TRAVEL AND ACCOMMODATION
EXPENSES WILL BE COVERED**



CONTACT

ANA.ALVESFRANCISCO@EINSTEINMED.ORG

OR 718-862-1824 TO KNOW MORE!